

**ITI0209: User Interfaces**

# **08. Design System. Continued**

Martin Verrev

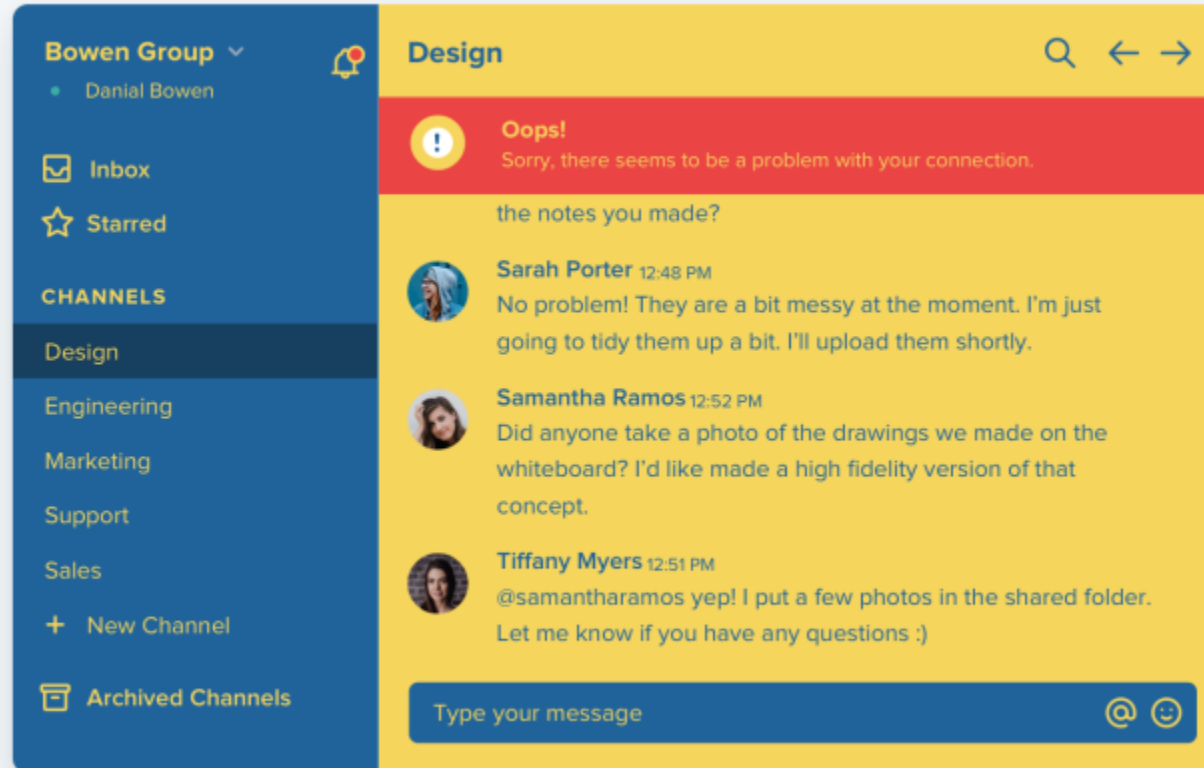
Spring 2023



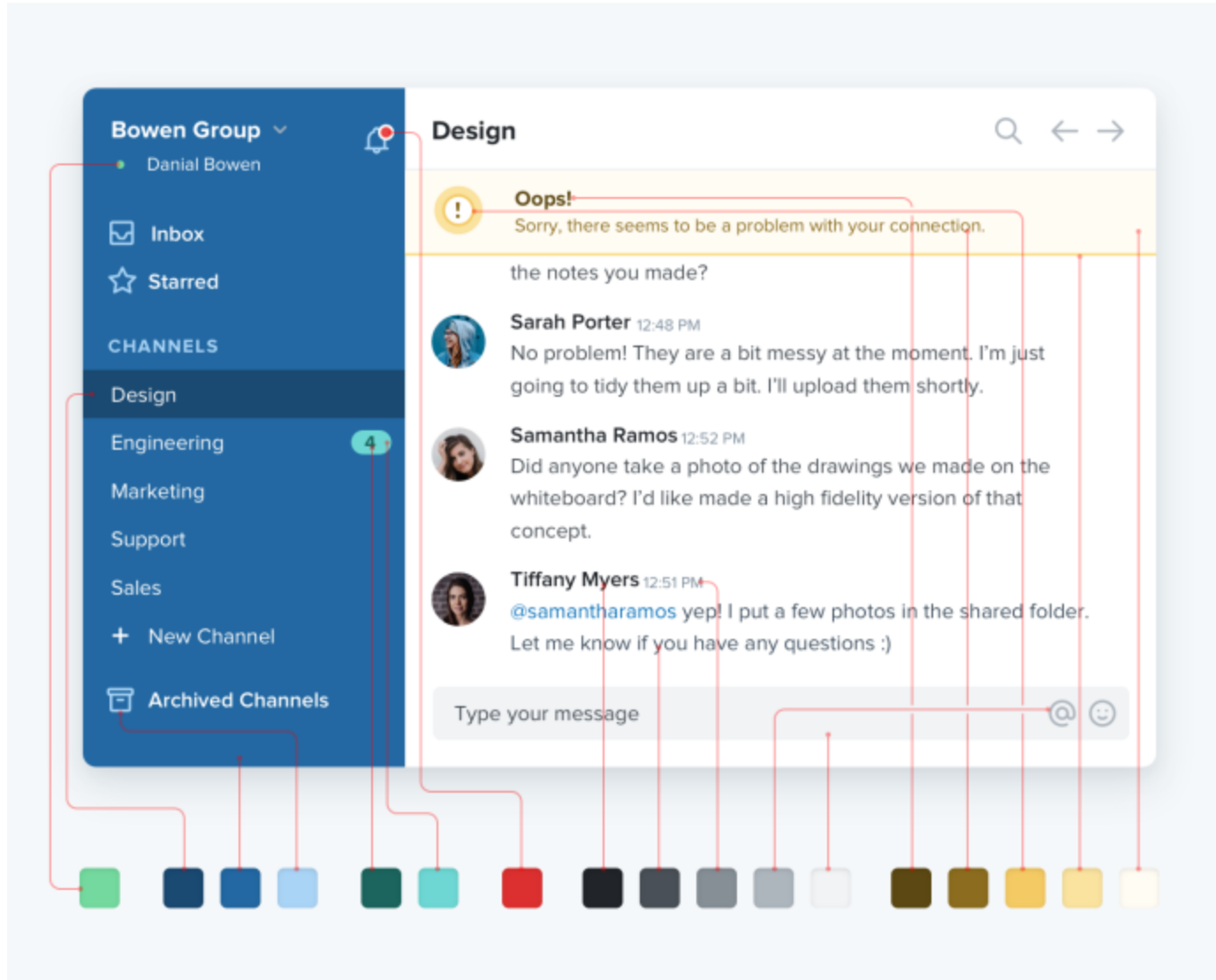
# Color

There's a lot of science out there on the psychology of color, but in practice, you really just need to pay attention to how different colors feel to you.

# Choosing primary colors is not enough



# You need more colors than you think



# Principles of Color

1. **Keep it simple** – too many colours makes using them hard. One or two core colours are required for a logo. These colours should become the visual identifiers across different media.
2. The colours need to **complement each other**, yet have good contrast.
3. **Be distinctive** – check the colours your competition is using.
4. **Test, test and test** – how do the colours look on screen and in print, are there any cultural issues, do they stand out on different backgrounds?
5. Most importantly - your colours need to **express and enhance the meaning of your brand**, have relevance to your audience and last for a long time.

# Choosing Primary Color

- **Red:** Coca-Cola or Nintendo – Implies excitement or happiness
- **Orange:** Nickelodeon or Fanta – Implies a friendly, fun time is ahead
- **Yellow:** Nikon or McDonalds – Implies optimism and happiness
- **Green:** Whole Foods or Animal Planet – Implies freshness and nature
- **Blue:** Walmart or American Express – Implies dependability and reassurance
- **Purple:** Roku, Twitch – Purple is associated with royalty, fantasy, and flowers
- **Brown:** Nespresso or UPS – Implies a reliable product that can be used by anyone
- **Black:** Chanel or Prada – Implies luxury or elegance
- **White:** Apple or Nike – Implies sleek, user-friendly products

# Tools

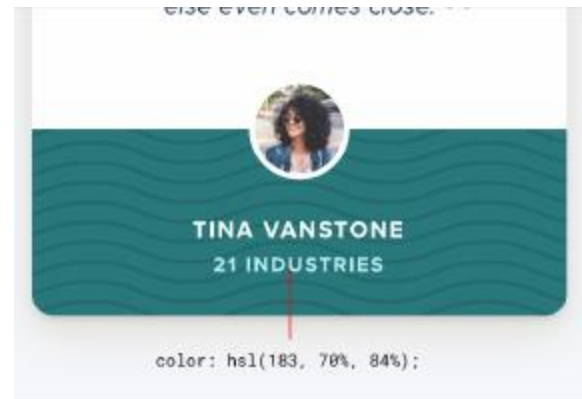
- **Colors:** <https://colors.co>
- **Colorsafe:** <http://colorsafe.co/>
- **Adobe Color:** <https://color.adobe.com/>



# Overall Tips for Style

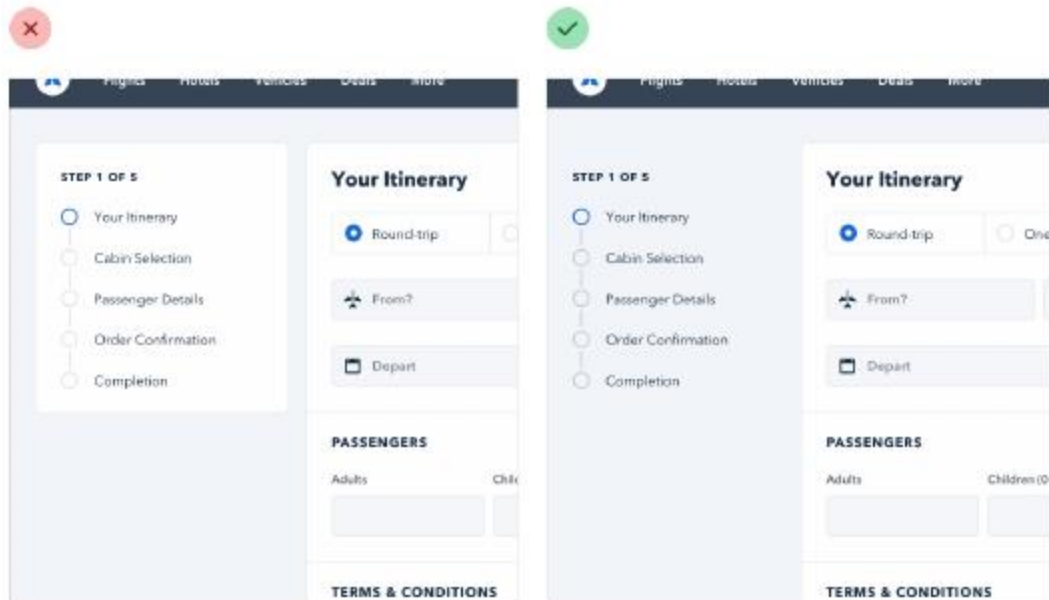
# Don't use grey text on colored backgrounds

Making the text closer to the background color is what actually helps create hierarchy, not making it light grey. Choose a color with the same hue, and adjust the saturation and lightness until it looks right to you



# Emphasize by de-emphasizing

Sometimes you'll run into a situation where the main element of an interface isn't standing out enough, but there's nothing you can add to it to give it the emphasis it needs.



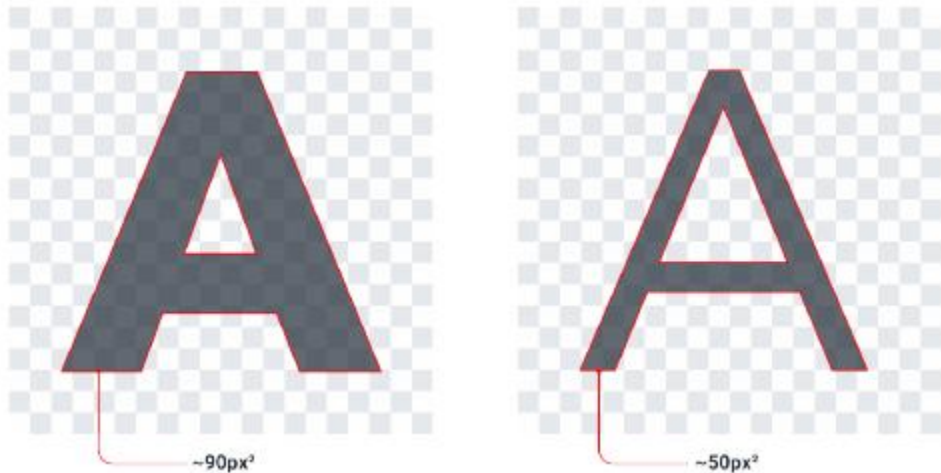
# Combine labels and values

If you're building a real estate app, something like "Bedrooms: 3" could simply become "3 bedrooms".



# Balance weight and contrast

The reason bold text feels emphasized is that in the same amount of space, more pixels are used for text than for the background. A simple and effective way to balance this is to lower the contrast of the icon by giving it a softer color.



# Start layout with too much white space



## Set up Two-Factor Authentication STEP 1 OF 3

Every time you sign in to your account, you will need your password and verification code

### Setup your phone

Enter the phone number you would like to use.

Country  Phone Number

# Start layout with too much white space



## Set up Two-Factor Authentication

STEP 1 OF 3

Every time you sign in to your account, you will need your password and verification code

### Setup your phone

Enter the phone number you would like to use.

Country



Canada



Phone Number

+1 (555) 555-5555



Next Step

# Layout and Space

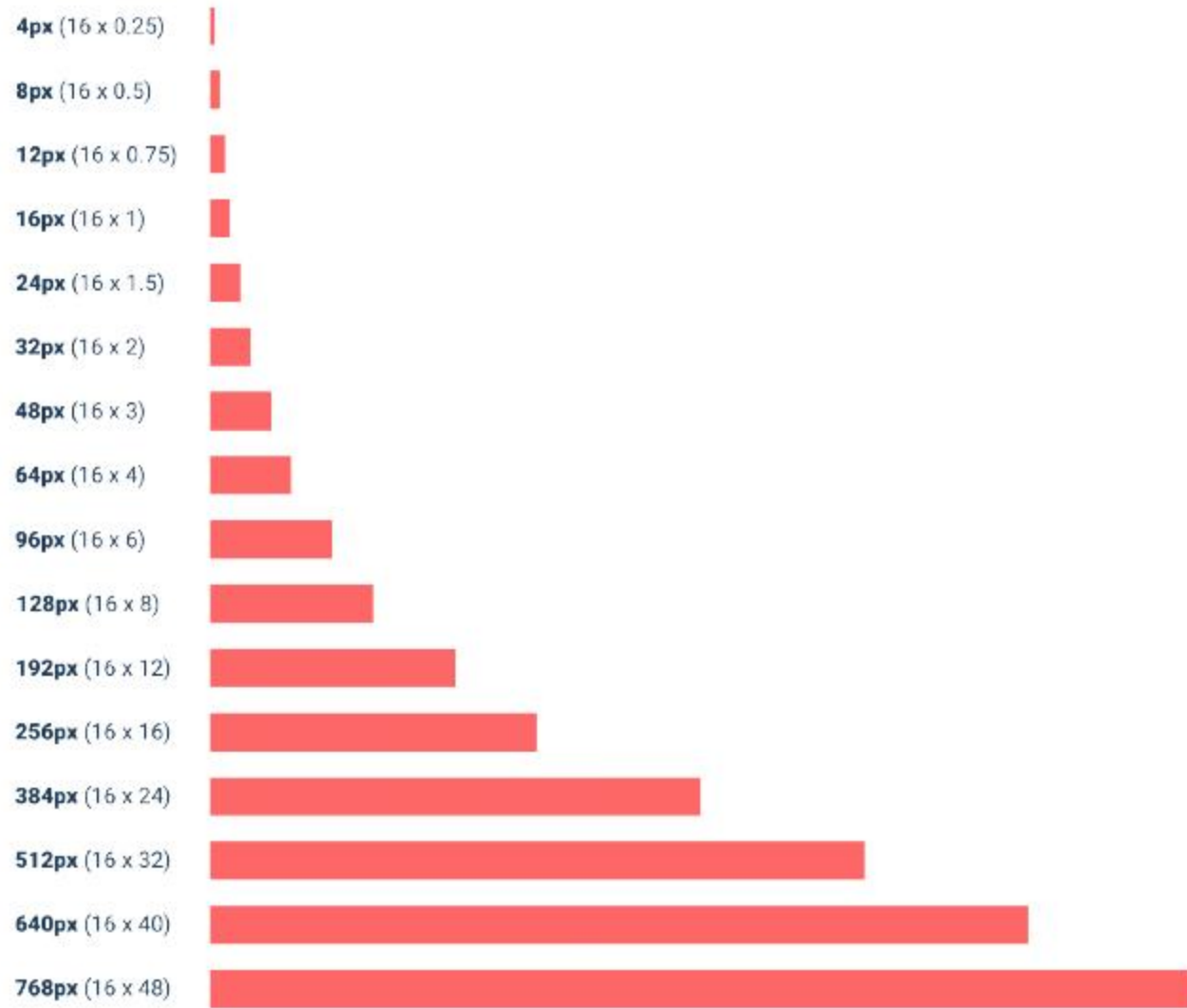
- White space should be removed, not added
- When designing for the web, white space is almost always added to a design - if something looks little too cramped, you add a bit of margin or padding until things look better.
- A better approach is to start by giving something way too much space, then remove it until it you're happy with the result.



# Establish a spacing and sizing system

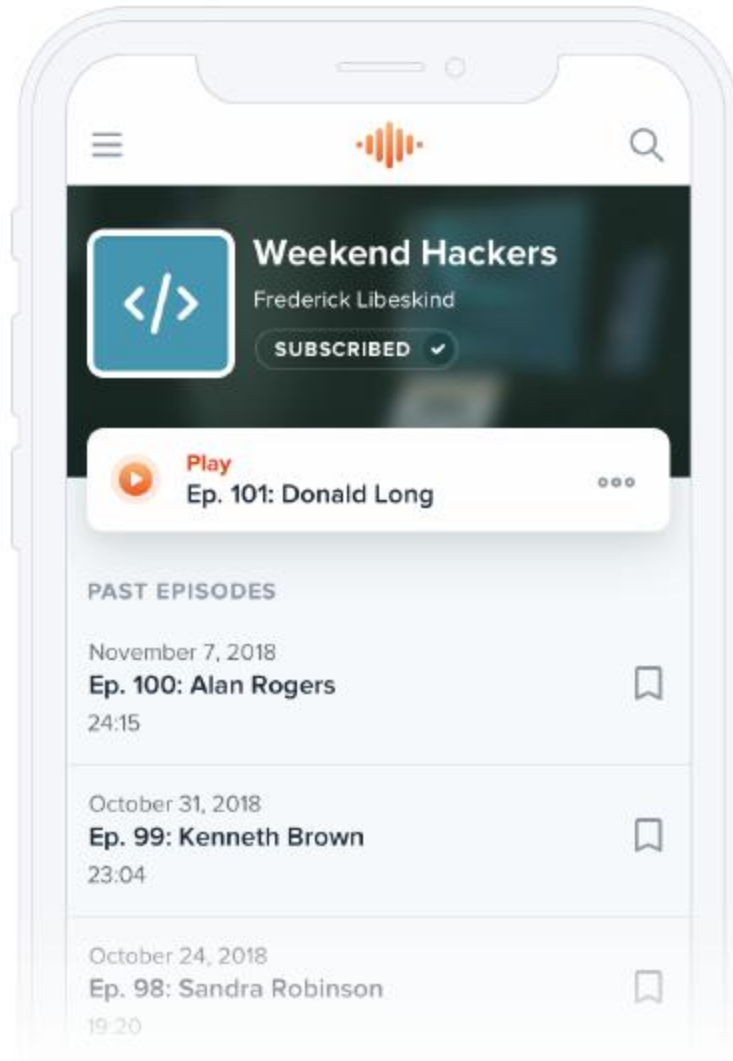
- Limit yourself to a constrained set of values, defined in advance.
- If you want your system to make sizing decisions easy, make sure no two values in your scale are ever closer than about 25%.
- A simple approach is to start with a sensible base value, then build a scale using factors and multiples of that value.

**16px** is a great number to start with because it divides nicely, and also happens to be the default font size in every major web browser.



# You don't have to fill the whole screen

- If you only need 600px, use 600px. Spreading things out or making things unnecessarily wide just makes an interface harder to interpret, while a little extra space around the edges never hurt anyone.
- This is just as applicable to individual sections of an interface, too. You don't need to make everything full-width just because something else (like your navigation) is full-width.



## Weekend Hackers

Frederick Libeskind

SUBSCRIBED ✓



Play

Ep. 101: Donald Long



### PAST EPISODES

November 7, 2018

**Ep. 100: Alan Rogers**

24:15



October 31, 2018

**Ep. 99: Kenneth Brown**

23:04



October 24, 2018

**Ep. 98: Sandra Robinson**

19:20



Browser navigation bar with back, forward, and refresh icons. The address bar is empty.

Spotify logo (orange waveform icon) | Browse | Library | Search icon

# Weekend Hackers

Frederick Libeskind

SUBSCRIBED ▾

**Play** Ep. 101: Donald Long

### PAST EPISODES

November 7, 2018	<b>Ep. 100: Alan Rogers</b>	24:15	Bookmark icon
October 31, 2018	<b>Ep. 99: Kenneth Brown</b>	23:04	Bookmark icon
October 24, 2018	<b>Ep. 98: Sandra Robinson</b>	19:20	Bookmark icon
October 17, 2018	<b>Ep. 97: Hannah Elizabeth</b>	23:09	Bookmark icon
October 10, 2018	<b>Ep. 96: Anthony Jordan</b>	22:16	Bookmark icon
October 3, 2018	<b>Ep. 95: Whitney Barns</b>	22:16	Bookmark icon

# Thinking in columns

If you're designing something that works best at a narrower width but feels unbalanced in the context of an otherwise wide UI, see if you can split it into columns instead of just making it wider.

A screenshot of a web browser window displaying the 'Account Settings' page for a service named 'Playback'. The browser's address bar is empty. The page header includes the 'Playback' logo and navigation links for 'Discover', 'Connect', 'Community', and 'Jobs'. On the right side of the header, there are icons for a mail envelope, a refresh symbol, and a user profile picture. The main content area is titled 'Account Settings' and is divided into two columns. The left column is titled 'Basics' and contains a paragraph of text: 'Having an up-to-date email address attached to your account is a great step toward improved account security.' The right column contains three form fields: 'Email address' with an empty text input field, 'Password' with a button labeled 'Change your password', and 'Language' with a dropdown menu currently showing 'Choose...'. At the bottom of the right column, the label 'Country' is partially visible.

# Avoid ambiguous spacing

- Relative sizing doesn't scale.
- When groups of elements are explicitly separated — usually by a border or background color — it's obvious which elements belong to which group.
- At best the user has to work harder to interpret the UI, and at worst it means accidentally putting the wrong data in the wrong field. The fix is to increase the space between each form group so it's clear which label belongs to which input.



## JOIN OUR GROWING COMMUNITY

- ✔ Connect with accomplished founders in your local area and have online conversations with others in the community. 24px
- ✔ Partake in exclusive questioning sessions with investors, executives and high-profile leaders. 24px
- ✔ Pitch your concepts and get insights from other founders.



## JOIN OUR GROWING COMMUNITY

- ✔ Connect with accomplished founders in your local area and have online conversations with others in the community. 24px
- ✔ Partake in exclusive questioning sessions with investors, executives and high-profile leaders. 36px
- ✔ Pitch your concepts and get insights from other founders.



# Keep your line length in check

- Too long lines make text hard to read. 75 characters per line is optimal width
- Line length isn't the only factor in choosing the right line-height — font size has a big impact as well.
- When text is small, extra line spacing is important because it makes it a lot easier for your eyes to find the next line when the text wraps.
- Line-height and font size are inversely proportional — use a taller line-height for small text and a shorter line-height for large text.

## Line Length

### Minimum 40 characters

---

sit essit velit, experum que non pa verspiet  
faccabo rendusant odit aut quas aut ide ven-  
deli taeped minctus quam ipsam quam et ullis  
ipsant millaccum aut labori doluptat est, velit  
landande nulluptatur sinimi, qui volendi net  
Ehent plam videl ipid quiatium eum, sinven-  
dae. Et verio ideremque volorum harum, tetur  
serem int fuga. Et vide a consece rovitior adit  
atecum acestrum evention restotat.Olor aliquo  
omnima simus.Uditas doloritium, alicipsandi  
volupiet ipis in nus acias voluptiam, omnis  
parum aute corios olor barron omnis webster.

---

Narrower columns are read more quickly.

### Maximum 75 characters

---

Cius mod mod est que molor moditios doluptiis destion et que que nonsen-  
dam, nectoreperro il inus molorum qui dolorias aut molo milit, sundici lore,  
officiae volupta spicto molorrovit, venecer enducip icidemo dem ea et fugitem  
porit, evelita sintus, odit molore peria derum, cum quid eum et pa quatemolo-  
rae acilicime porendipsant ut quod quiduciunt occae doluptatur, sus a dusan-  
dam quatur sus re sin prerorum elloreperis dolupicias secto cone rem facidus  
nonsequiati tem quam dolorep erfero experum neceat.Ullaut rent, vit ex est  
volorecation pla soluptur sam il ilibus voluptatisin re consed quia quiandi ut  
quis nones quos debis archillam doluptas quidiat.Rio. Ximet, esti dolupid es  
que dest, qui sum sequias mi, odi cus, iundioriatum corepudae dolorem rem  
aut prae nos amus, tem quature stiassinist ommodit mintio beres dempel inte-  
mol uptur, alicae erfernam dolesci nisqui cus.

---

Wider columns are read more slowly.

# Alignment

- In general, text should be aligned to match the direction of the language it's written in, In general, text should be aligned to match the direction of the language it is written in.
- Center-alignment can look great for headlines or short, independent blocks of text.
- If you're designing a table that includes numbers, right-align them.



### **The one-size-fits-all solution**

Build a beautiful website without touching code. We'll provide you with all of the tools and insights to grow your online business. Our templates are all you need to stand out from the rest of the competition.



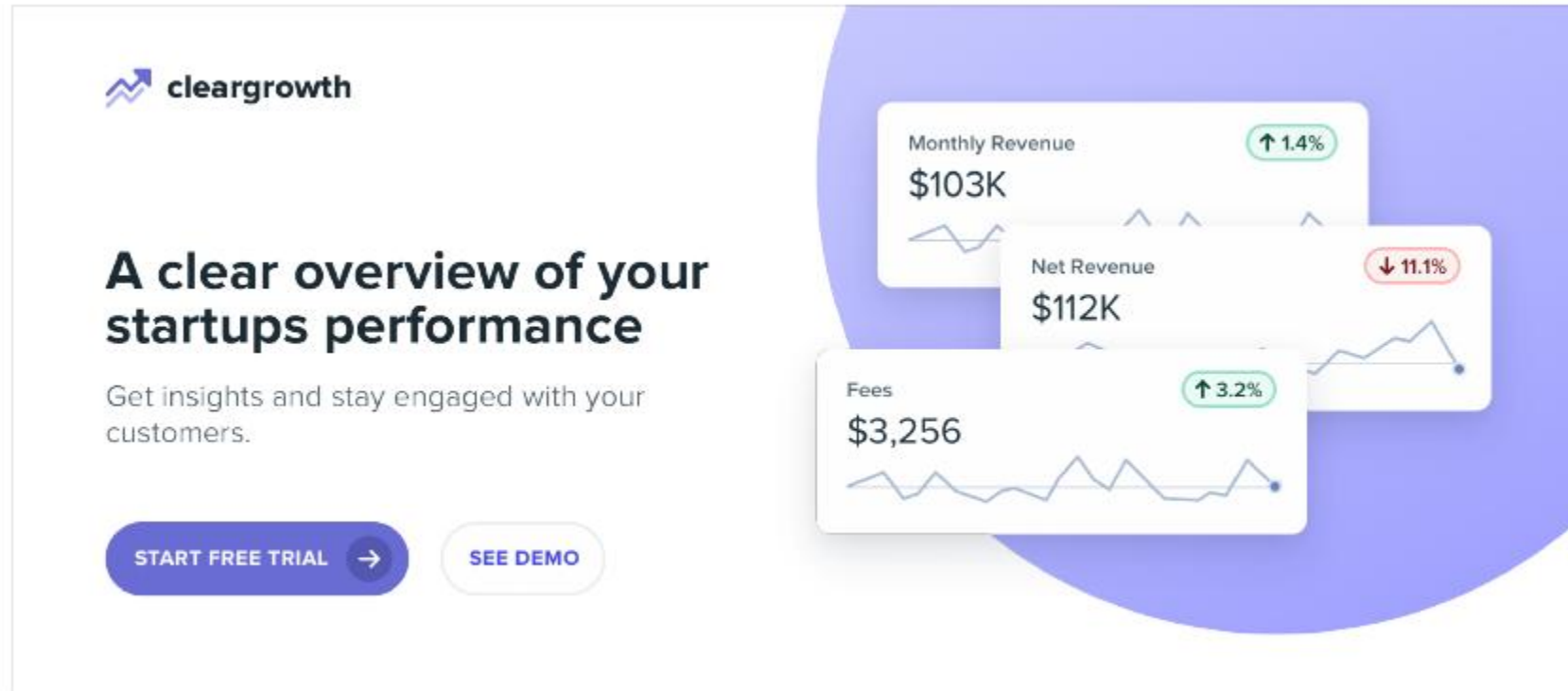
### **The one-size-fits-all solution**

Build a beautiful website without touching code. We'll provide you with all of the tools and insights to grow your online business. Our templates are all you need to stand out from the rest of the competition.

# Border Radius

- As small of a detail as it sounds, if and how much you round the corners in your design can have a big impact on the overall feel.
- A small border radius is pretty neutral, and doesn't really communicate much of a personality on its own

A large border radius starts to feel more playful:

A screenshot of the ClearGrowth dashboard. The dashboard features a white background with a large, light blue circular graphic on the right side. On the left, the ClearGrowth logo is at the top, followed by the headline "A clear overview of your startups performance" and the subtext "Get insights and stay engaged with your customers." Below this are two buttons: "START FREE TRIAL" with a right-pointing arrow and "SEE DEMO". On the right, three data cards are displayed, each with a white background and rounded corners, overlapping each other. The top card shows "Monthly Revenue \$103K" with a green upward arrow and "1.4%". The middle card shows "Net Revenue \$112K" with a red downward arrow and "11.1%". The bottom card shows "Fees \$3,256" with a green upward arrow and "3.2%". Each card includes a small line chart at the bottom.

No border radius at all feels a lot more serious or formal:



FUSION VENTURES

We invest in companies  
that make a difference

A group of investors helping companies  
establish, develop, and change the world.

Learn more →

# Language

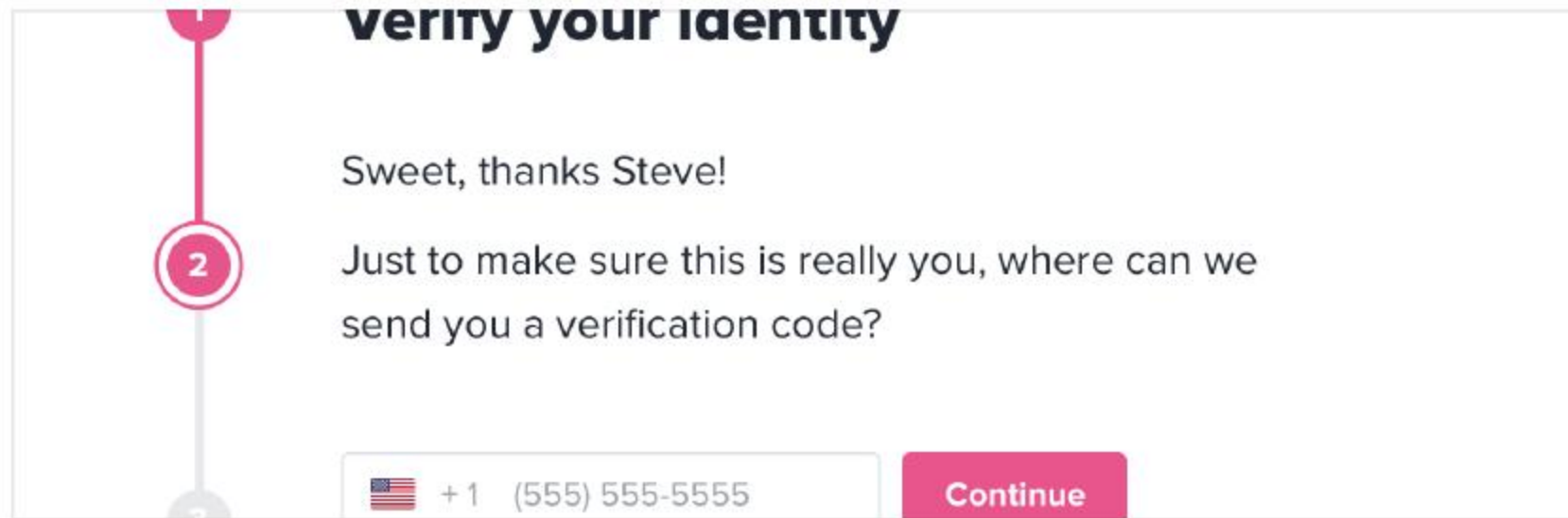
- While not a visual design technique per se, the words you use in an interface have a massive influence on the overall personality.
- Using a less personal tone might feel more official or professional
- Using friendlier, more casual language makes a site feel, well, friendlier.

See also: <https://rockcontent.com/blog/google-tool-inclusive-language/>



# Language

Words are everywhere in a user interface, and choosing the right ones is just as (if not more) important than choosing the right color or typeface.



**verify your identity**

Sweet, thanks Steve!

Just to make sure this is really you, where can we send you a verification code?

+1 (555) 555-5555

Continue

# Examples of Design Systems

- Google Material Design System. <https://material.io/>
- Apple Human Interface Guidelines. <https://developer.apple.com/design/>
- Atlassian Design System. <https://atlassian.design/>
- Shopify Polaris. <https://polaris.shopify.com/>
- Uber Base Web. <https://baseweb.design/>
- Taltech. [https://haldus.taltech.ee/sites/default/files/2022-02/TalTech\\_CVI\\_2022.pdf](https://haldus.taltech.ee/sites/default/files/2022-02/TalTech_CVI_2022.pdf)
- Tartu Ülikool. <https://ut-stiiliraamat.voog.com/>
- UK Government Design System. <https://design-system.service.gov.uk/>

See also: Design Systems in Finland. <https://github.com/viljamis/design-systems-in-finland>

# Refactoring UI

*Adam Wathan, Steve Schoger*

2018

<https://www.refactoringui.com/>



# Design Systems. A practical guide to creating design languages for digital products.

*Alla Kholmatova*

2017

<https://www.smashingmagazine.com/provide/eBooks/design-systems.pdf>



# Links

- Everything you need to know about Design Systems.  
<https://uxdesign.cc/everything-you-need-to-know-about-design-systems-54b109851969#>
- A Brief Guide to Creating a UI Style Guide.  
<https://xd.adobe.com/ideas/process/ui-design/ui-style-guide-template/>
- 10 great design systems and how to learn (and steal) from them  
<https://uxdesign.cc/10-great-design-systems-and-how-to-learn-and-steal-from-them-4b9c6f168fa6>
- Typography for Developers. <https://css-tricks.com/typography-for-developers/>
- How to Use web fonts. <https://blog.logrocket.com/how-to-use-web-fonts-in-css-a0326f4d6a4d>
- Fonts in Use <https://fontsinuse.com/>

**Thank you!**